

2023 Seattle Pride Parade Accessibility Guide

Contents

- Seattle Pride Parade Map
- ADA Parking information
- Transportation Information
- American Sign Language (ASL) interpretation
- Food & Beverage Assistants
- Accessible Restrooms

Seattle Pride Parade Map

This event will be held along Fourth Avenue in Downtown Seattle. It starts on Pike Street and ends on Denny Way.



Image description: Map of downtown Seattle. Seattle Pride Parade Galactic Love. Legend with icons. 4th Avenue marked in blue between Pike Street (on the south end) and Denny Way (on the north end). From south to north, services and amenities are:

- Contingent staging area: South Washington Street to Pike Street
- Start at Pike Street
- Westlake Park, 4th Avenue and Pine Street: Parade HQ, Pre-show Stage, Parade Announcer, ADA priority seating, restroom, first aid, food truck, alcohol garden
- Alcohol Garden: 4th Avenue near Lenora
- 4th Avenue and Lenora Street: stage, ADA priority seating, restroom, first aid
- The L Corner: 4th Avenue and Denny Way, stage, restroom, first aid
- End at Denny Way

For a larger map, please visit our website at SeattlePride.org.

ADA Parking Information

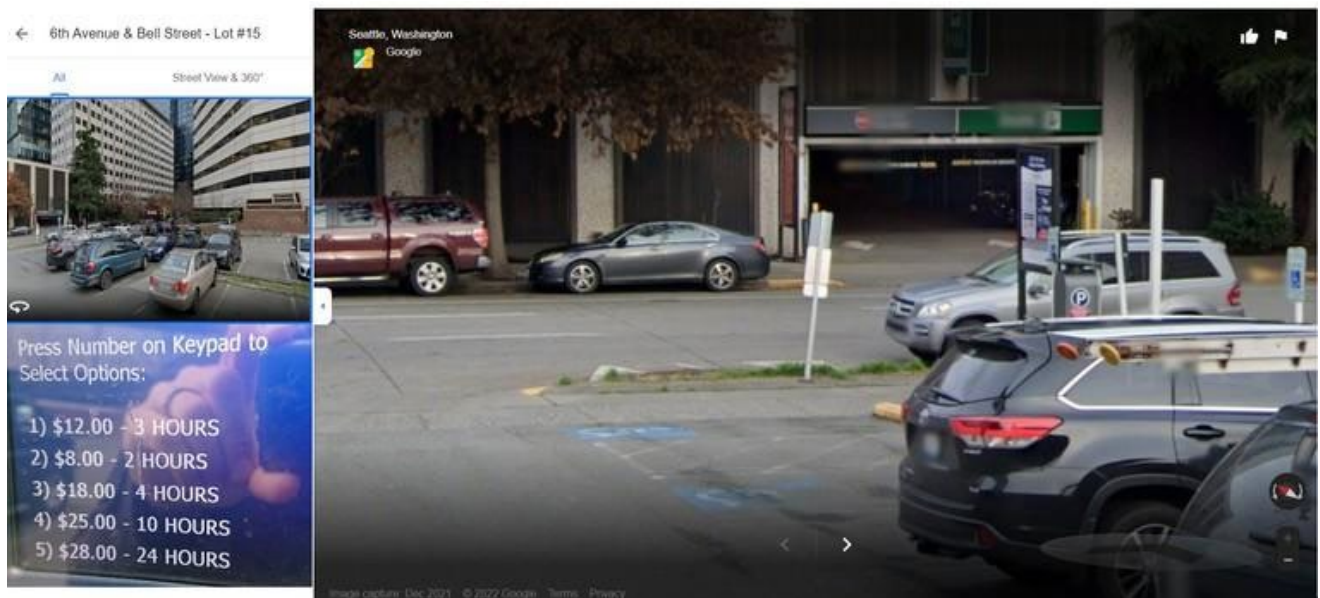
Below is a list of sample options, followed by images, we could find along the parade route. We have also included a link to the 'Spot HERO' parking assistant website where you can filter by area, wheelchair accessibility and more.

We know these spots will fill up fast, and advise arriving early if at all possible. Seattle Pride is not responsible for parking in the surrounding Parade area and is not covering any parking costs or fees. Park at your own risk.

Parking at 6th Avenue & Bell Street

(Two blocks east and two blocks north of the 4th & Lenora Stage)

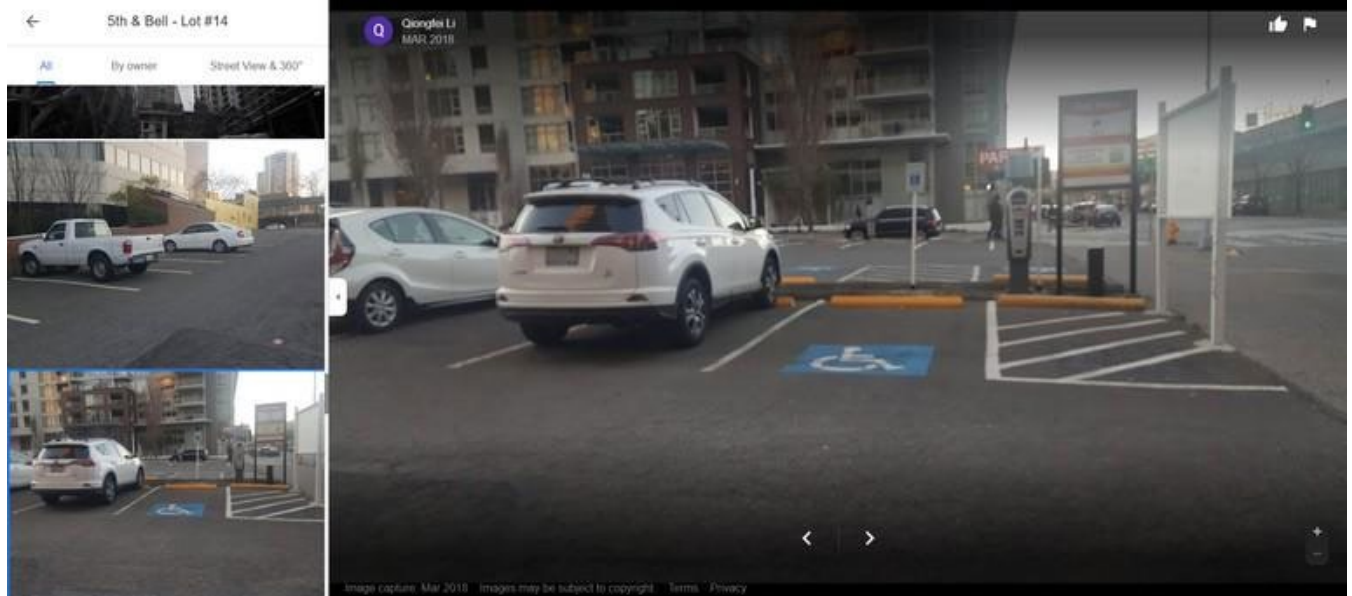
Lot #15: 2231 6th Ave, Seattle, WA 98121



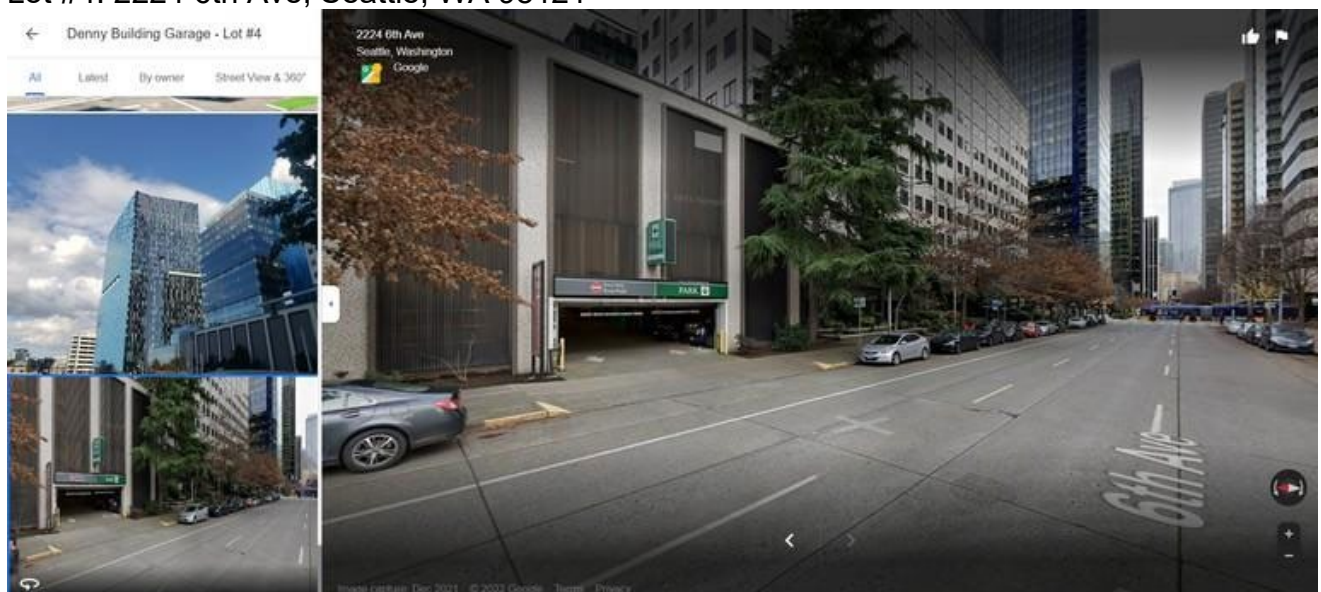
Parking at 5th Avenue & Bell Street

(One block east and two blocks north of the 4th & Lenora Stage)

Lot #14: 2230 5th Ave, Seattle, WA 98121



Parking at Denny Building Garage
(Two blocks east and two blocks north of 4th & Lenora Stage)
Lot #4: 2224 6th Ave, Seattle, WA 98121



There are tools you can use online to find parking suggestions. Spot Hero is one of those tools with interactive online parking search, including an ADA Filter. Website: [Spot Hero Website](#) (not tested for accessibility)

Public Transportation Information

If you are parking further out and wish to take public transportation closer to the Seattle PrideParade, here are a few options and key information to assist in planning your trip. Included are:

- [Seattle Center Monorail to Westlake Center](#)
- [Link Light Rail from Northgate Station to Westlake Center](#)
- [Link Light Rail from Tukwila International Blvd Station \(Park & Ride\)](#)
- [King County Metro Bus Routes](#)

American Sign Language (ASL) Interpretation

Seattle Pride is providing American Sign Language (ASL) interpretation at two stage locations: the Westlake Stage and the 4th & Lenora Stage along Fourth Avenue. Please note that stage and interpreter visibility can be disrupted by floats and crowds.

Food & Beverage Assistants

Seattle Pride is providing Volunteer Food & Beverage Assistants at both reserved seating areas for people with disabilities.

What are Food & Beverage Assistants?

These are Seattle Pride volunteers who can assist individuals with disabilities in accessing the nearest food truck, refreshments, or alcohol garden. They may also escort individuals back to their seats, wait in line for their orders, and bring the order to the individual. They will not place your order for you/handle your money. Ask a Seattle Pride Volunteer in a bright yellow vest to help identify a Food & Beverage Assistant.

Accessible Restrooms

Accessible Portable Restrooms (Honey Buckets) will be available at all three stages along Fourth Avenue. Some of the features you'll find in their line of ADA compliant restrooms include:

- Flat-floored wheelchair accessible entrance
- Strategically positioned and reinforced handrails
- ADA Compliant no-slip ramp system
- Call Honey Bucket at (800) 444-2371 to learn more.



To request a disability related or for more information about access needs, please email Programs@SeattlePride.org or call (206)306-3182.